

Sawolol®

LED Cube Speaker Plus

NSP-8117PL



www.sawolol.com

Sawolol

Cube LED Speaker Plus

Cube LED Speaker with 360 degree full lights

Material:ABS Plastic

Bluetooth specification:V5.0

Support TF Card/AUX/Hands-free call

360 degree revolving full lights

Time function with alarm clock

Speaker:ø52MMm/ 4ohms /8W

Signal to noise ratio:90HZ-20K/65dB

Battery: 2200mAh

Power supply voltage:5v

Working Time: Up to 5 hours

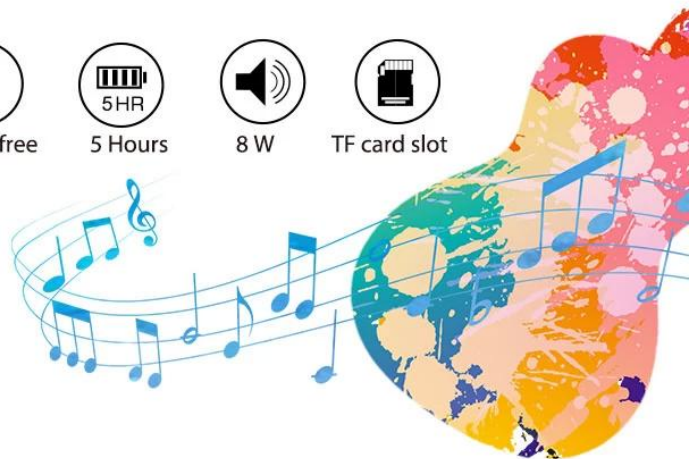
Charging time: 4 hours

Colors: Multi-color is Optional

Accessories: USB charging cable, Manual, Gift box

Product size:16*16*18CM

HS code: 8518210000



www.sawolol.com

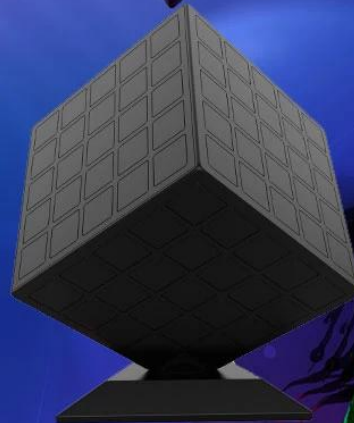
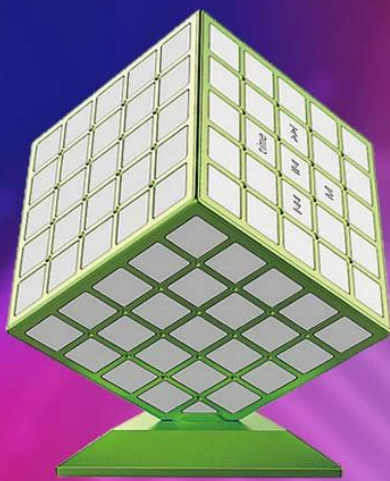
Sawolol®

 3D Full LED Light



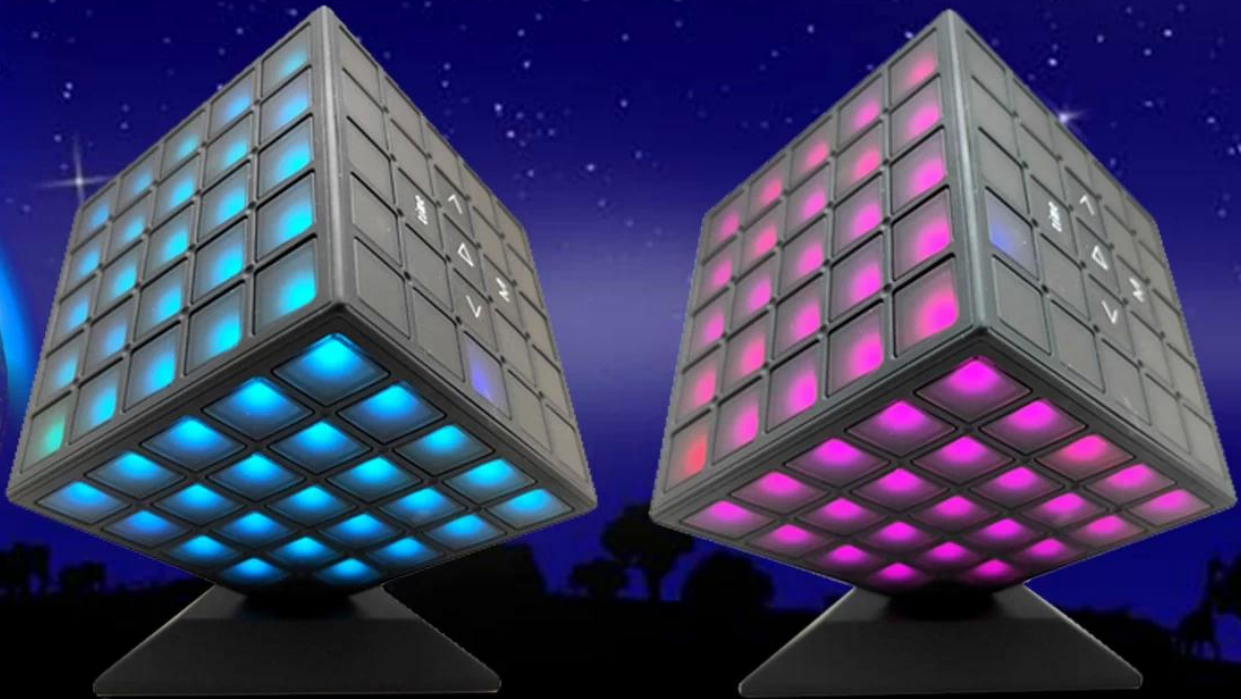
www.sawolol.com

Multiple color options



Sawolol®

Multi-color Night Lights



www.sawolol.com

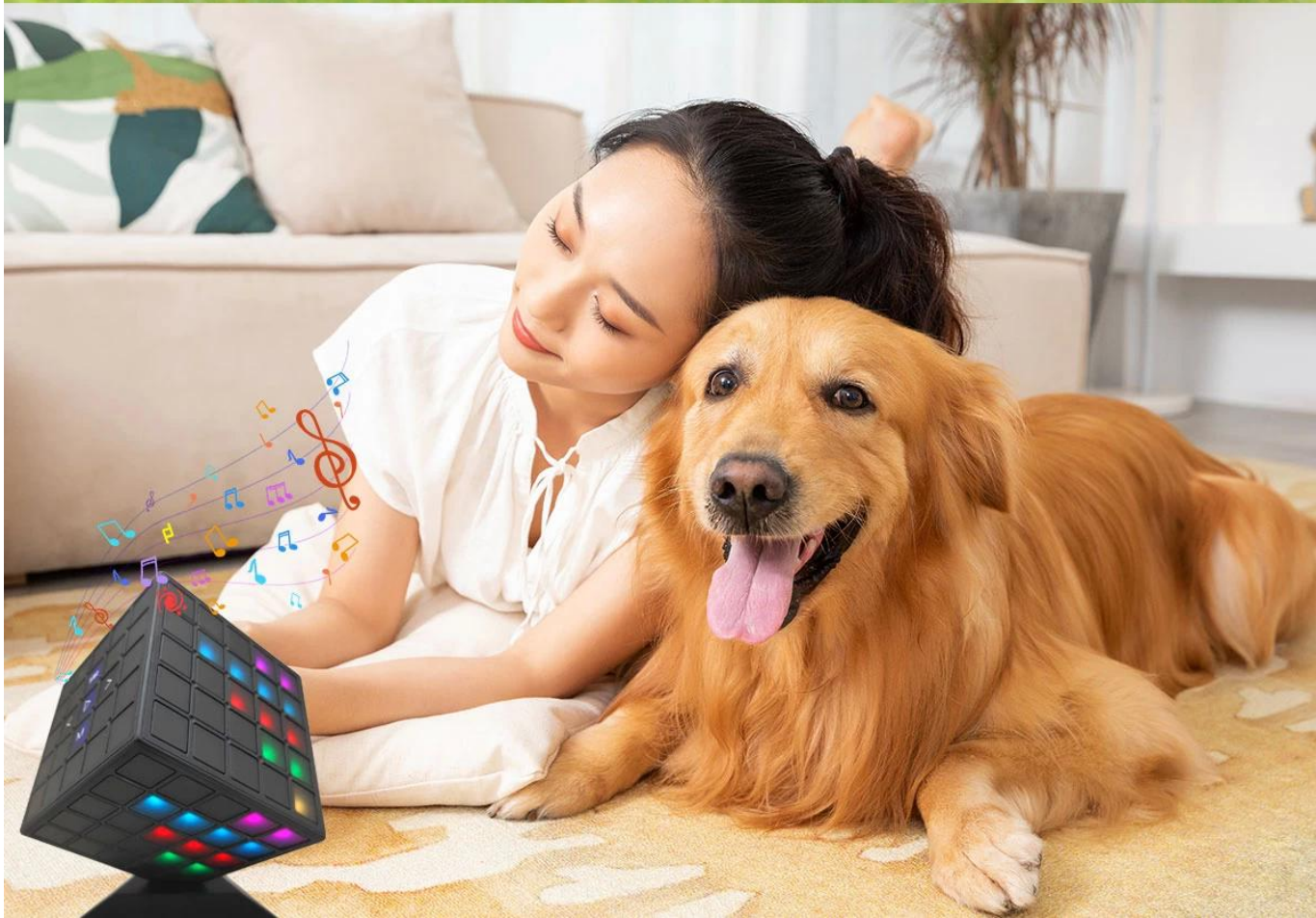
Sawolol

The clock display



www.sawolol.com

Sawolol®



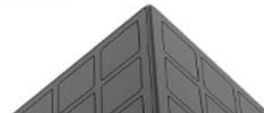
Sawolol

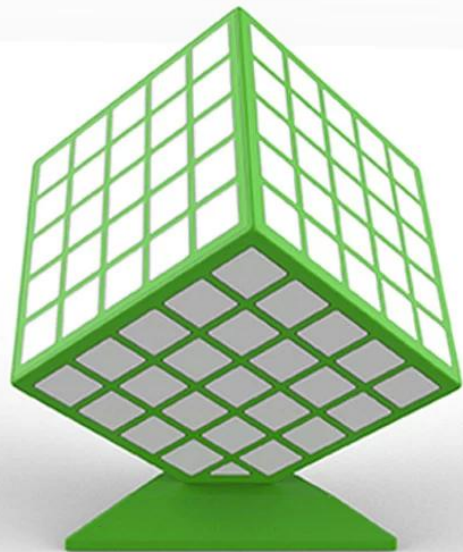
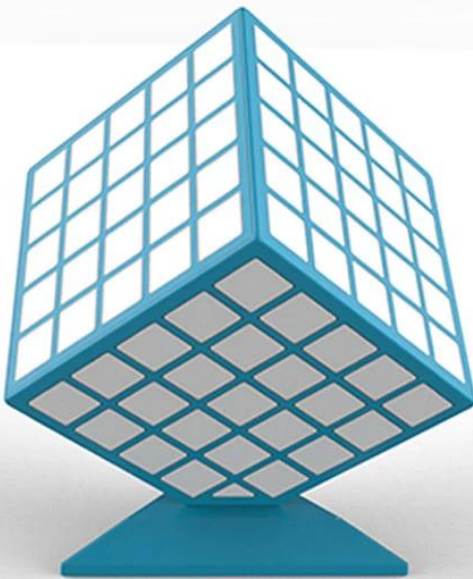
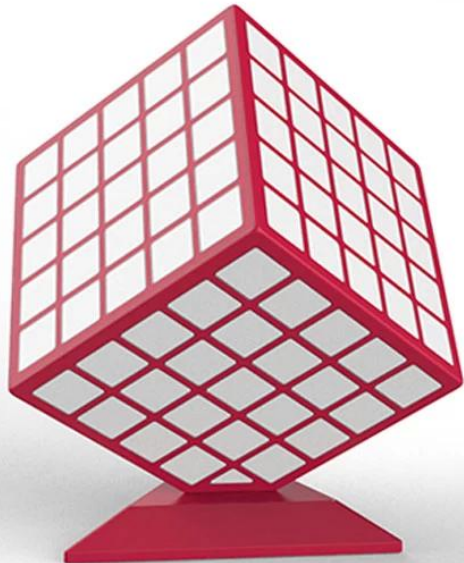
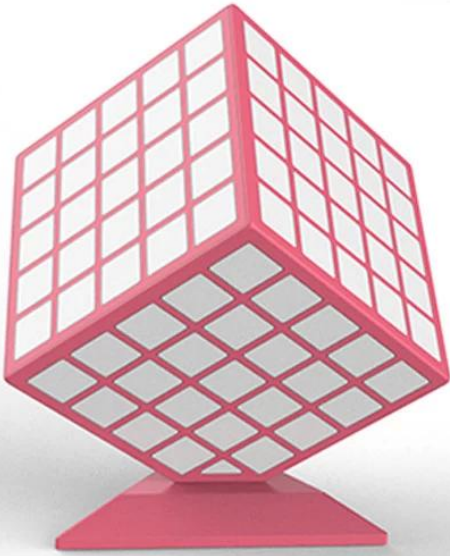
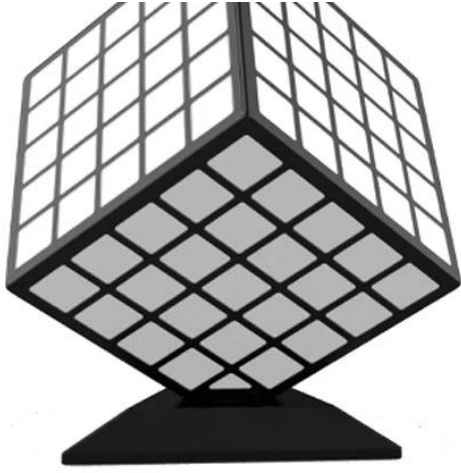
Seven music lamp modes

Various colored lights vary randomly



Sawolol





FAQ:

About led light speaker bluetooth supplier:

- Can you do OEM/ODM led light speaker bluetooth?

We have a strong experienced in OEM/ODM customized audio products with R & D team, Product Design Team who can provide 3 new design products quarterly with unique design and high quality function to our business partner.

- Which certificate for your led light speaker bluetooth?

Our led light speaker bluetooth is comply with electronics products testing standard of CE,ROSH, FCC ,BQB etc.

- What is lead time for normal order?

Sample Time: 3-7 working days for normal samples;
Mass Order Time: 25-35 days after sample approval for daily orders.

- Which package for the led light speaker bluetooth?

Normally it is our standard gift box and it is OK to do customized package box as per requirements.

- How long time for the led light speaker bluetooth warranty?

The warranty of led light speaker bluetooth is one year from the date of shipping for the goods under normal use excluding batteries and other expendable accessories.

Please contact with us freely for any query via our customer service mail info@sawolol.com, thanks!We will full support you for our long time coming business cooperation,thanks!