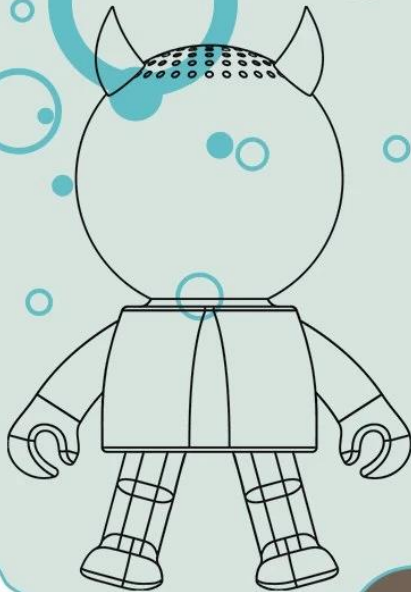
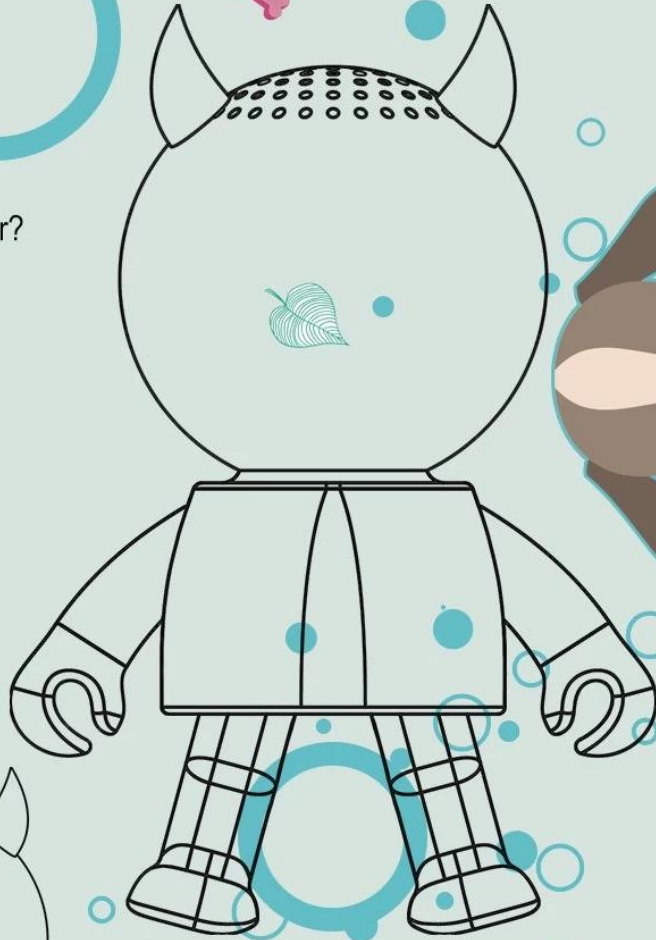
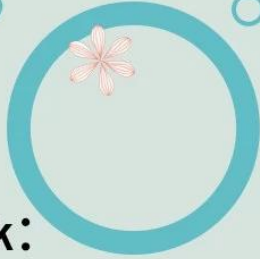


蓝牙音箱
蓝牙音箱
蓝牙ABS塑料
TWS双耳
蓝牙V5.0
蓝牙
蓝牙TF
蓝牙3W
蓝牙20Hz-20KHz
蓝牙4 蓝牙
蓝牙1 蓝牙
蓝牙
蓝牙
蓝牙USB
蓝牙13*9*6cm

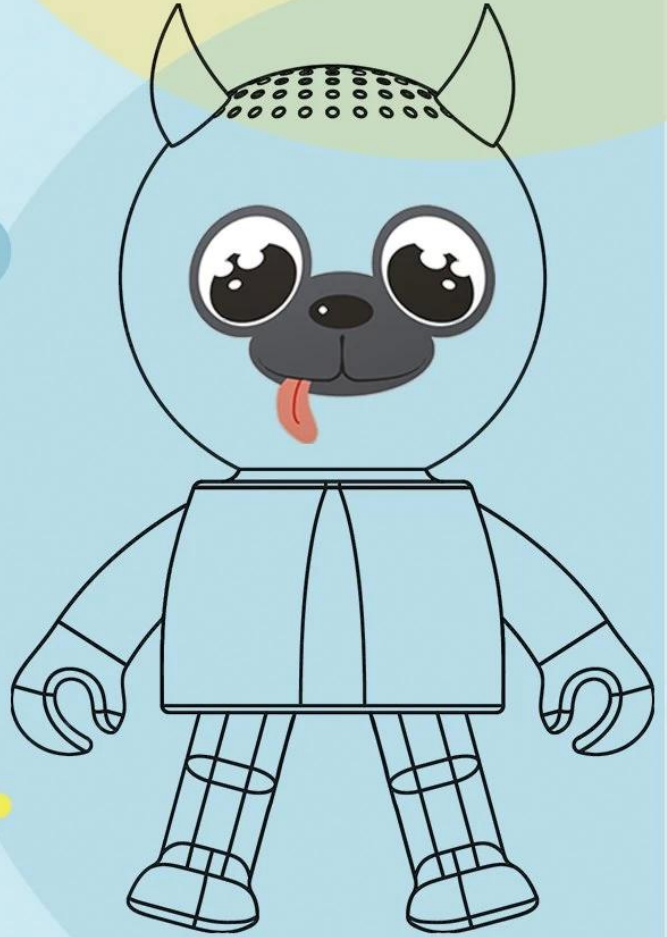


Think:
How to design a joyful music player?





Draft Drawing:
A joyful image.









Sawolol®



www.sawolol.com

Sawolol®



www.sawolol.com



- **Bluetooth**

Bluetooth is a short-range wireless technology standard that uses UHF radio waves in the ISM band to connect devices.

- **Bluetooth Low Energy (BLE)**

Bluetooth Low Energy (BLE) is a subset of Bluetooth designed for low power consumption, allowing devices to operate for months or years on a single battery charge.

- **Bluetooth Mesh**

Bluetooth Mesh is a network topology that allows devices to communicate with each other in a multi-hop, many-to-many configuration. It is supported by iOS 11 and Apple Watch, and Android 6.0 and later.

- **Sawolol** is a social networking platform.

No.Sawolol Dancing is a social networking platform that offers 3 different types of content: photos, videos, and live streaming.

- **Sawolol** is a social networking platform.

Sawolol is a social networking platform that offers a variety of features, including profile creation, messaging, and content sharing.

- **Sawolol** is a social networking platform.

Sawolol is a social networking platform that offers a variety of features, including profile creation, messaging, and content sharing.

For more information, please contact us at info@sawolol.com.